

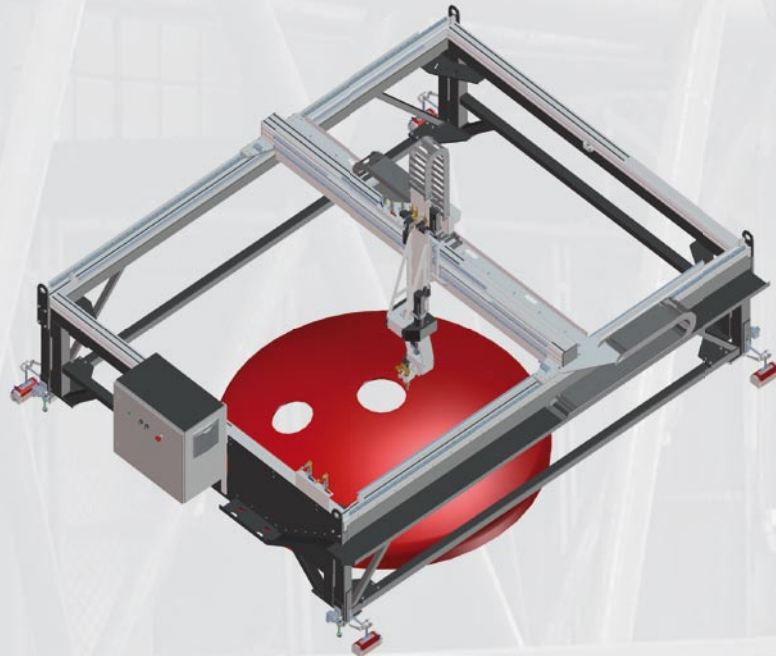
MCM-4000 / MCM-1000

5-axis portable CNC cutting and welding machine



[®]
PROMOTECH

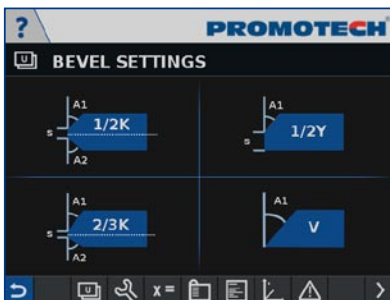
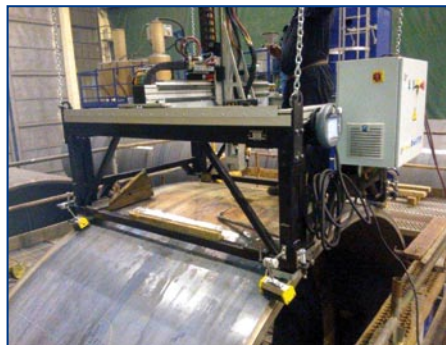
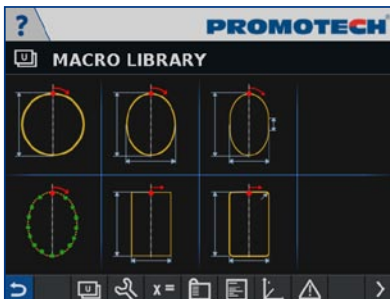
Promotech's portable CNC shape cutting machine performs oxy-fuel or plasma cutting with single or double sided bevel on pressure vessels, pipes, tanks, various steel structures. It can be used on flat or curved plates and can be fixed off-centre (hill side).

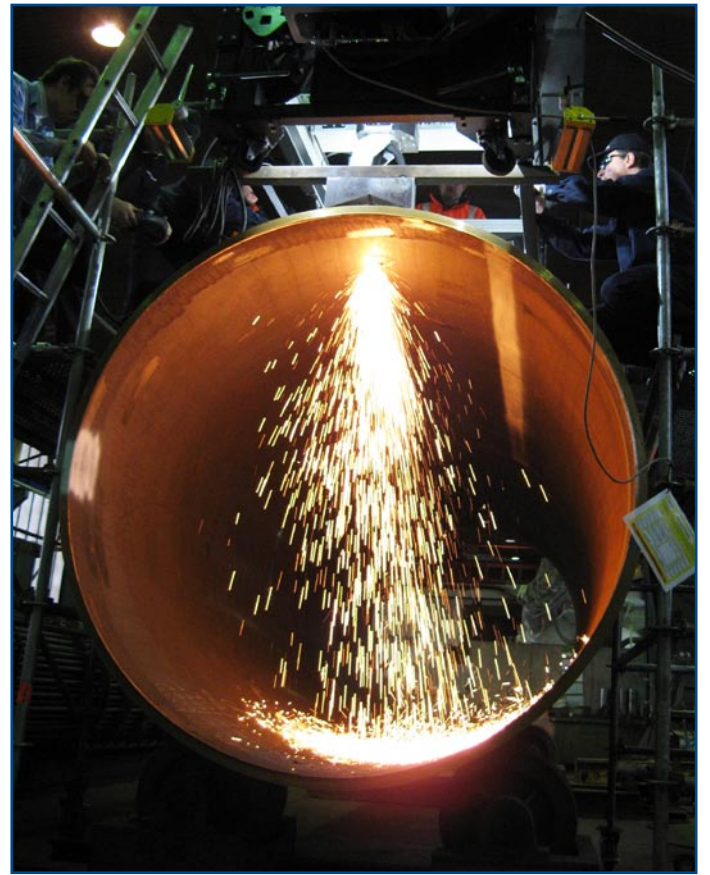


MCM main advantages:

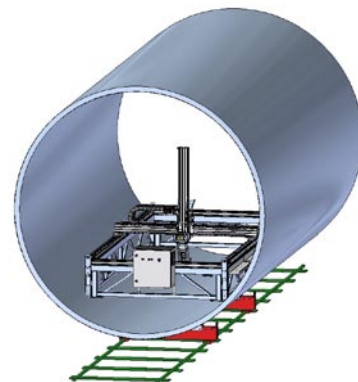
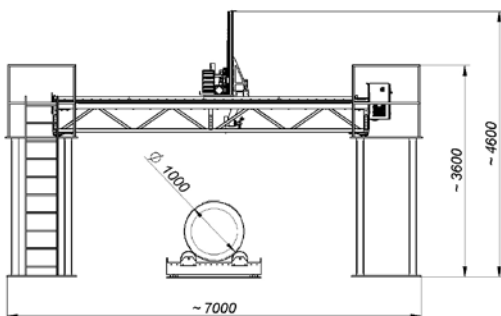
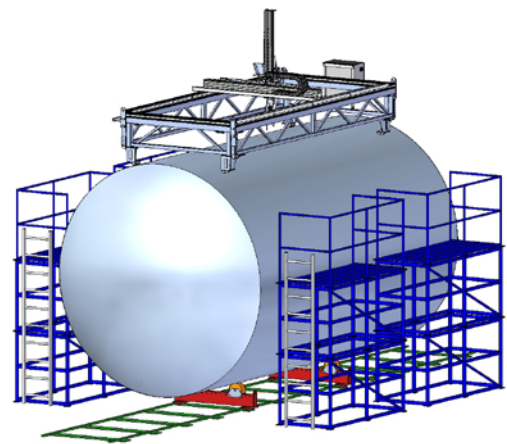
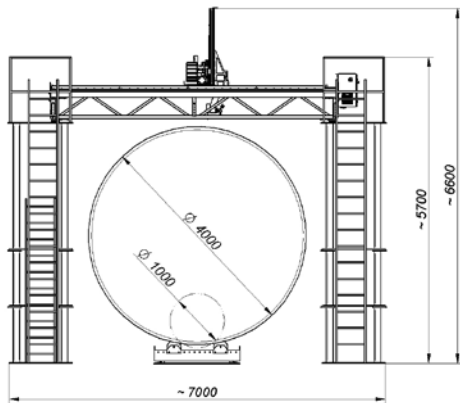
- Full portability
- Cutting, beveling and welding processes are performed in automated cycles
- Off-centre (hill side) hole cutting/beveling and welding
- Multi-surface scanning for cutting and welding
- Fast hole positioning with laser spot
- Torch path teaching
- Simple and user friendly interface allows easy input and configuration of cutting/beveling and welding
- High quality, efficient and repeatable performance
- Semi automatic remote torch correction
- WI-FI monitoring, recording and uploading

Technical specifications of MCM	MCM-1000	MCM-4000
Power supply	3x400V+PE+N(230V as option); 50-60 Hz	3x400V+PE+N(230V as option); 50-60 Hz
Total consumption (excl. power source)	3000 W	3000 W
Positioning	directly on top of a workpiece or by means of external fixing device	by means of external fixing device or directly on top of a workpiece
Minimal OD when positioned directly on a workpiece	2000 mm	4000 mm
Positioning: inside the workpiece	OPTION	OPTION
Workpiece OD range	min. 1000 mm	min. 1000 mm
Working range	1000x2200 mm	1200x4100
Effective Cutting diameter	50 - 1000 mm	50 - 1200 mm
Plate thickness Option: 200mm	15 - 150 mm ON REQUEST	15 - 150 mm ON REQUEST
Bevel angle	0 to 45°	0 to 45°
Max torch speed in X and Y axis	up to 4.0 m/min	up to 4.0 m/min
Weight	ca. 500 kg	ca. 720 kg
Number of controlled axis:	5 axis	5 axis
Cutting: • Oxy-acetylene Harris cutting kit • Plasma ready	YES Option	YES Option
Welding: SAW/GMAW/FCAW/MCAW	Option	Option
Menu in English, German, Spanish	YES	YES



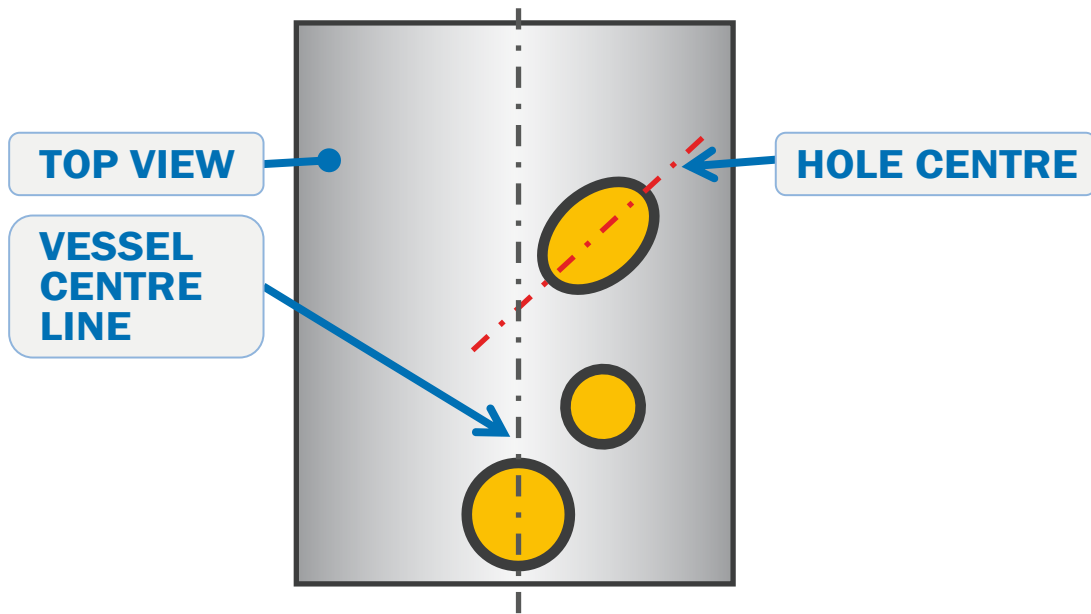


Sample MCM work station, working range from vessel OD 1 up to 4 m, above 4m vessel OD MCM can be fixed directly on a workpiece with fast and easy positioning without the requirement for MCM precise positioning and leveling to the workpiece.

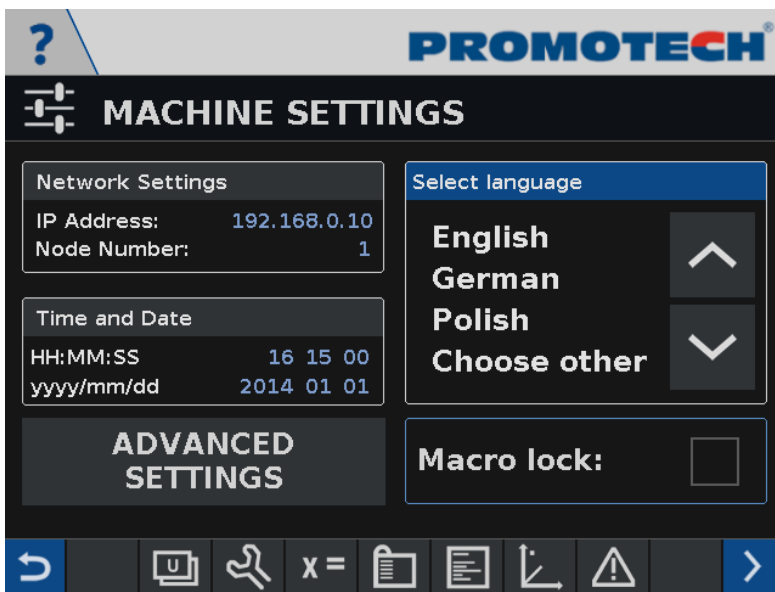


SAMPLE MCM WORK STATION – VESSEL OD min. 1000 mm

▪ OFF CENTRE (HILL SIDE) CUTTING&BEVELING AND WELDING



MCM machines can be diagnosed and monitored on-line.



Built-in network router enables remote access to machine interface



Compatible with mobile and desktop devices



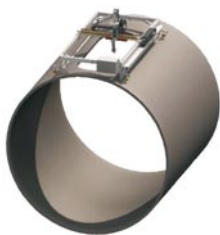
WIFI and cable connections



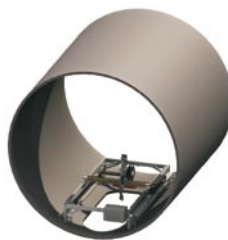
On-request software updates and machine diagnostics

Working applications on tanks, tubes, vessels and flat plates:

• external



• internal



• vertical



(special version)



PROMOTECH Sp. z o.o.
ul. Elewatorska 23/1, 15-620 BIAŁYSTOK, POLAND
tel. (+48 85) 678 34 05, fax (+48 85) 662 78 77
marketing@promotech.eu www.promotech.eu

