



# **Spare parts list**

## **Hydraulic Power Pack**

### **PAC P 9**





**2008-10**

**No. 3392 5160 01 a**

© Copyright Chicago Pneumatic Construction Tools  
STOCKHOLM • SWEDEN



## Introduction

Welcome! Protect your investment in the world's finest hydraulic tools. Use genuine CP replacement parts.

The purchase of replacement parts for your CP tools deserves the same good judgment that resulted in the purchase of the tools themselves. Each genuine CP part is made from carefully selected and inspected material, subjected to sophisticated machinery and finishing processes and heat-treated to produce just the right combination of hardness, ductility and impact resistance for its intended use. Each part is identical to, and made concurrently with, parts used in production tools.

The use of parts other than genuine CP replacement parts can lead to substandard performance, early failure, possible damage of other parts and, in some instances, unsafe conditions.

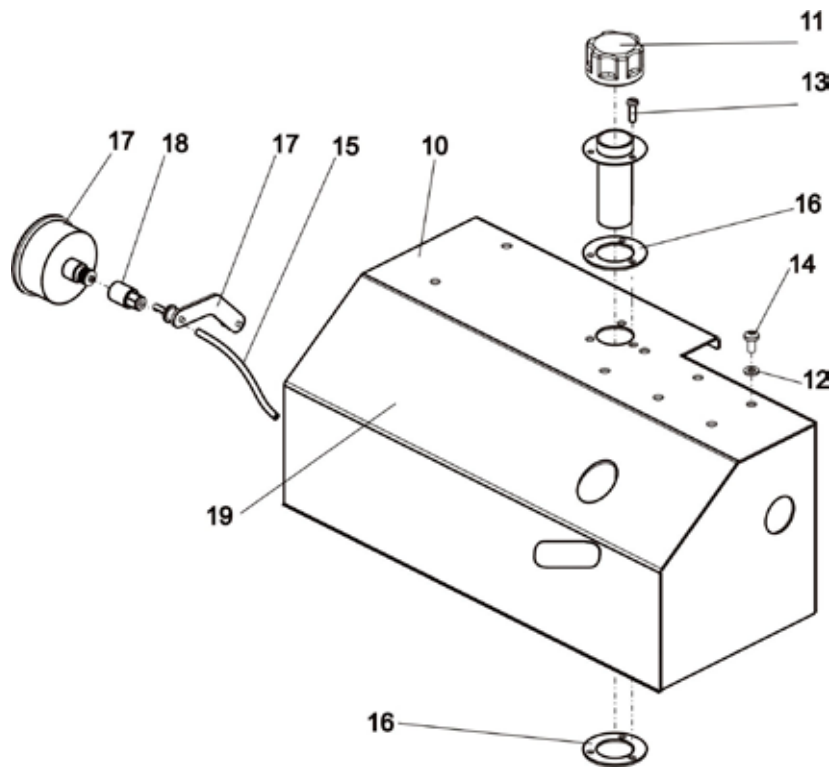
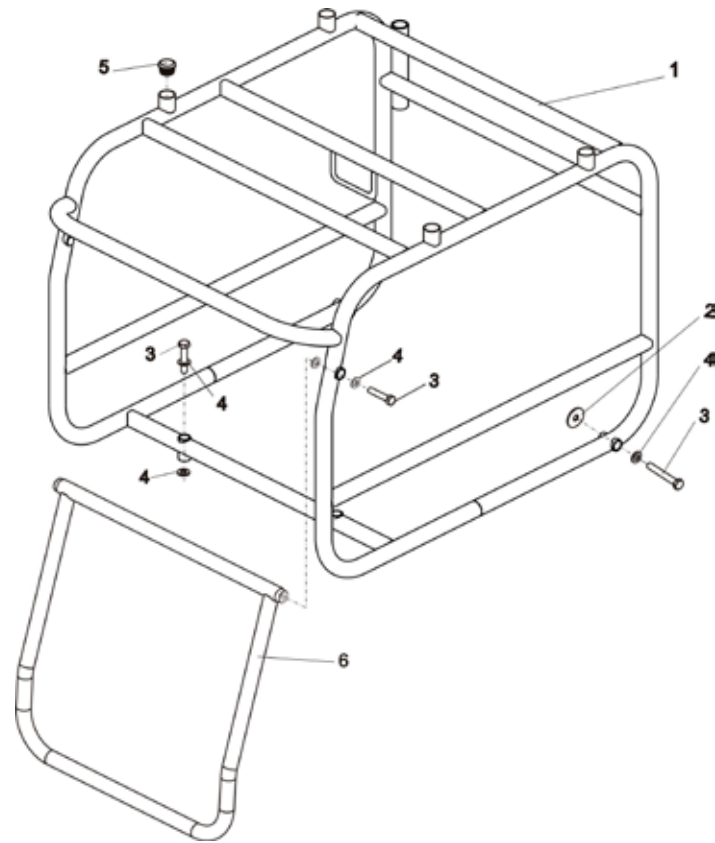
Use only authorized parts. Any damage or malfunction caused by unauthorized parts will not be covered by the Warranty or Product Liability.

Any machine modification not approved by Chicago Pneumatics may result in serious injuries to yourself or others.

To reduce the risk of injury, read and understand the relevant safety and operating instructions before operating the machine.

Before undertaking any maintenance or changing the working tool on hydraulic machines, always switch off the hydraulic oil supply and bleed the machine by activating the start and stop device. Then disconnect the hydraulic hose from the machine.

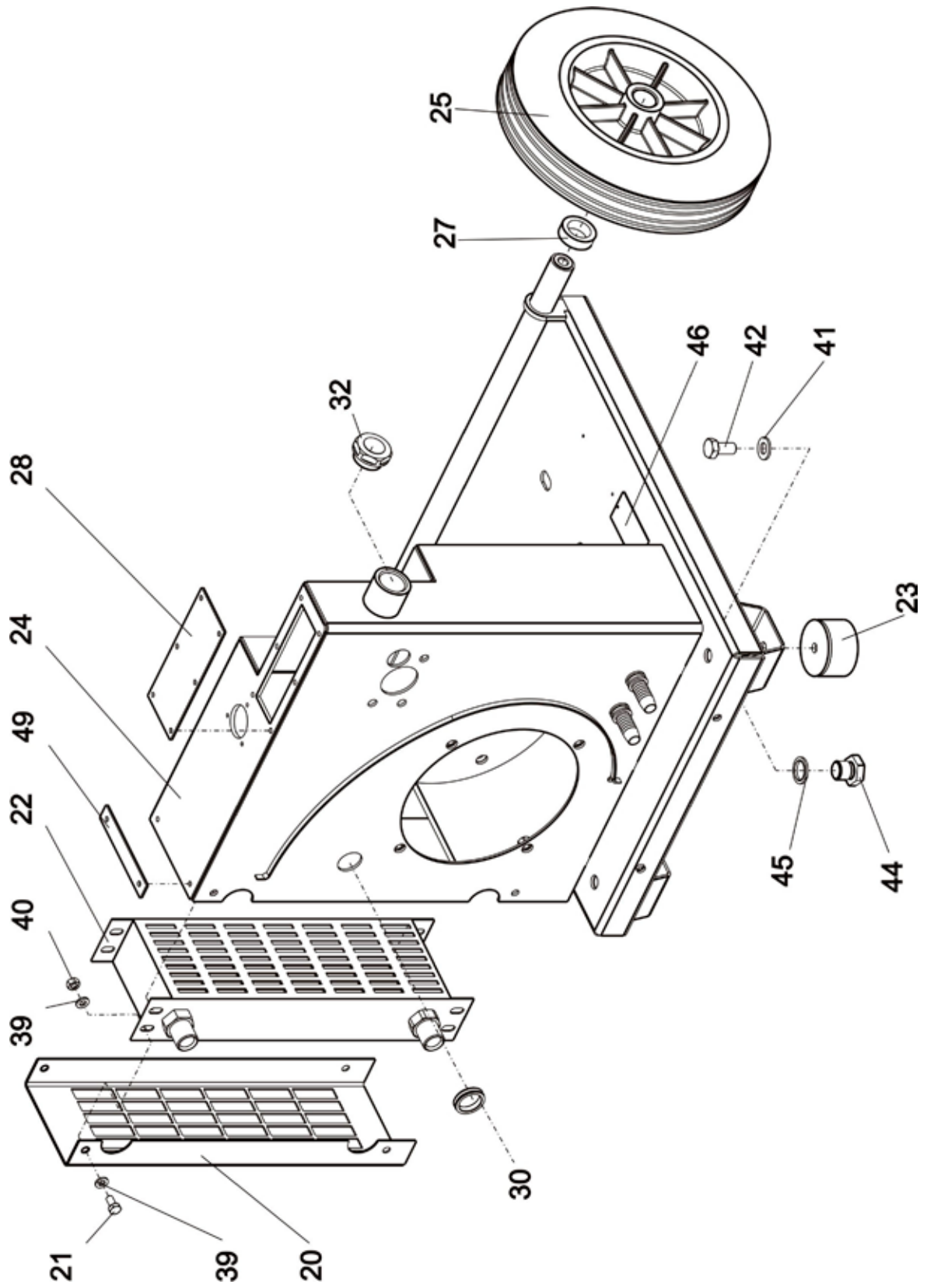
The PAC P 9 is a hydraulic power pack designed for operating CP hydraulic breakers and other work tools.



**A**



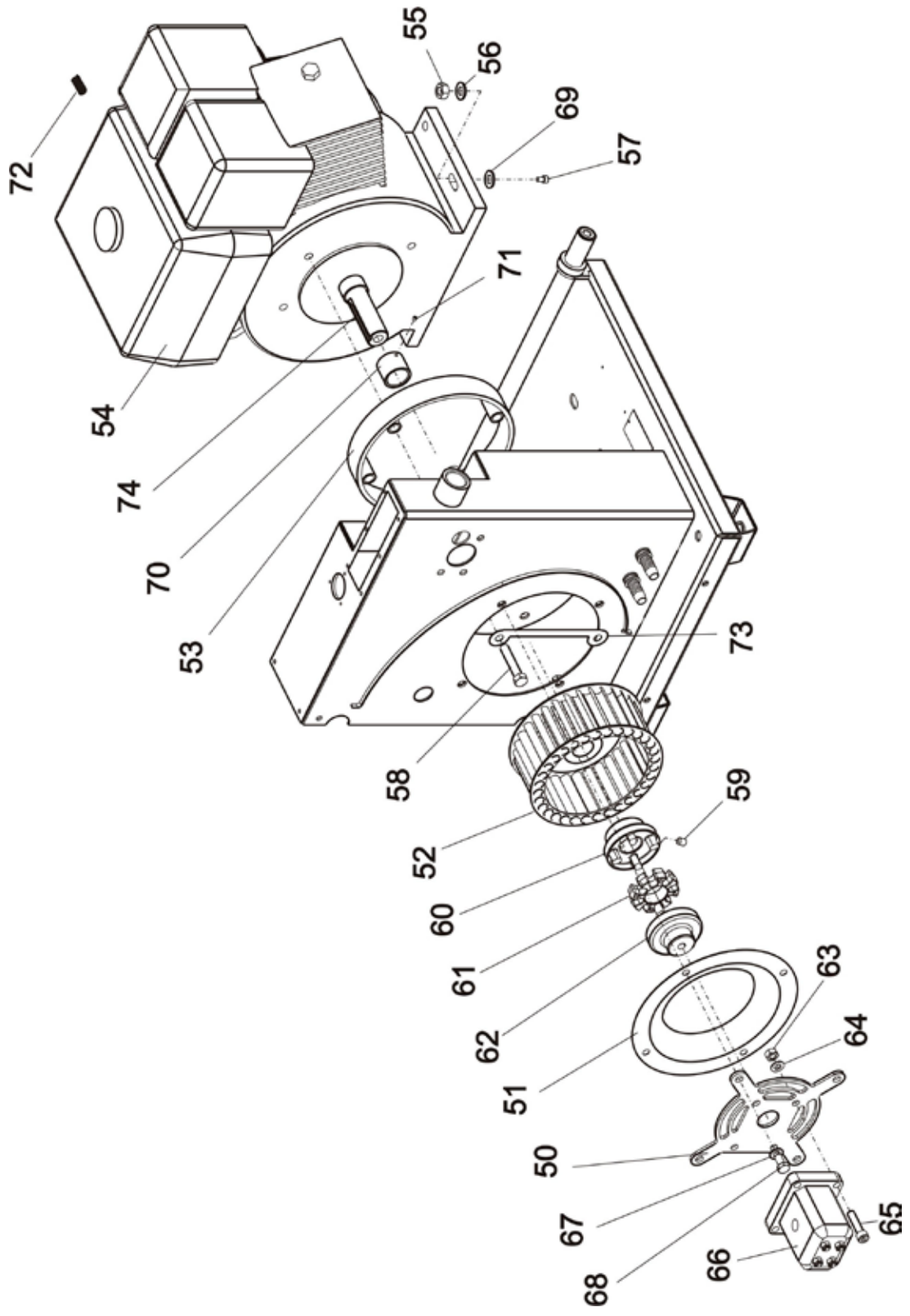
No.	Part Number	Quantity	Description	
1	3377 0210 58	1	Frame	
2	3377 1040 10	2	Washer	3/8" x ø35
3	3377 1200 10	6	Screw	M10x50, use Loctite 245
4	3377 1000 10	10	Washer	ø10
5	3371 8055 07	4	Plastic pipe plug	
6	3377 0210 59	1	Handle	
10	3377 0007 40	1	Cowl	For EU approved power packs
10	3377 0007 63	1	Cowl	For not EU approved power packs
11	3377 0052 59	1	Filler cap	
12	3377 1000 06	8	Washer	ø6
13	3377 0004 01	3	Screw	M5x16
14	3377 0004 00	8	Screw	M6x12
15	3377 0007 48	1	Gauge hose	L=300 mm
16	3377 0004 03	2	Seal	
17	3377 0050 67	1	Filter gauge complete	Incl. clamp
18	3377 0004 04	1	Fitting 04	Use sealing tape
19	3371 8971 58	1	Label	Panel for PAC P 9



**B**



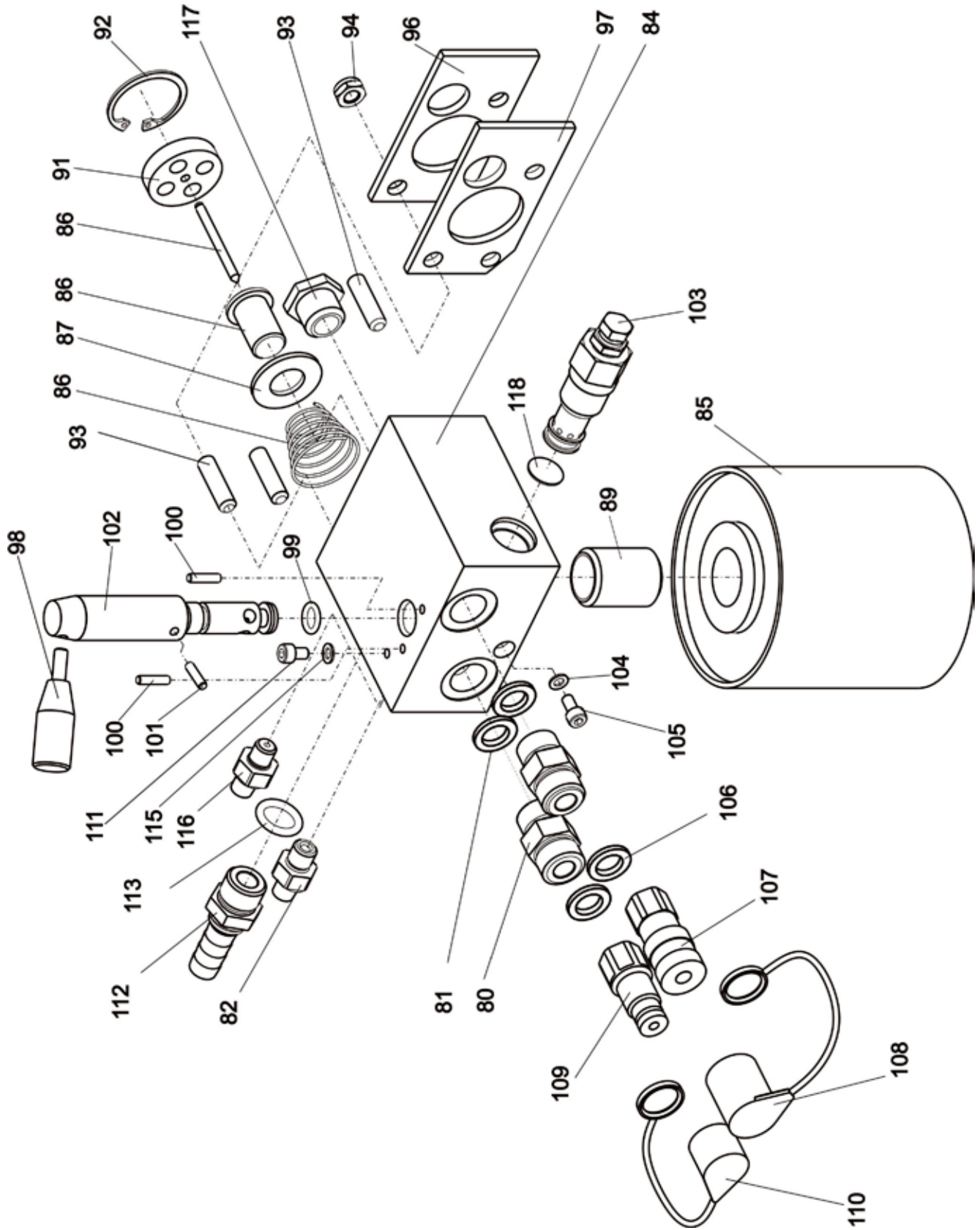
No.	Part Number	Quantity	Description
20	3377 0000 27	1	Cooler guard
21	3377 1232 06	8	Screw M6x12, use Loctite 245
22	3377 0050 68	1	Oil cooler
23	3377 0004 05	2	Rubber foot
24	3377 0210 37	1	Tank/chassis Complete with guard and plate
25	3377 0056 12	2	Wheel Only available in pairs
27	3377 0002 21	2	Washer $\varnothing 32/22 \times 10$
28	3377 0000 28	1	Seal
30	3377 0050 87	2	Rubber grommet
32	3377 0050 72	1	Sight glass
39	3377 0004 07	16	Washer $\varnothing 12/6.5 \times 1.5$ (steel)
40	3377 1100 06	8	Nut M6
41	3377 1000 10	4	Washer $\varnothing 10$
42	3377 0004 06	2	Screw M10x14, use Loctite 245
44	3371 8037 07	1	Fitting 06
45	3377 0163 75	1	Seal ring 3/8"
46		1	Data plate Not supplied separately
49	3377 0005 05	1	Seal







No.	Part Number	Quantity	Description
50	3377 0033 87	1	Pump plate
51	3377 0014 38	1	Fan inlet ring
52	3377 0025 81	1	Fan
53	3377 0004 08	1	Spacer ring
54	3377 0004 09	1	Engine Honda GX270QXB7
55	3371 8067 02	4	Nut M10
56	3377 1000 10	4	Washer $\varnothing$ 10
57	3377 1210 10	4	Screw M10x40, use Loctite 245
58	3377 0004 10	4	Screw UNC3/8x51
59	3377 0004 15	2	Screw M8x10
60	3377 0051 68	1	Engine half coupling
61	3377 0051 69	1	Coupling spider
62	3377 0051 70	1	Pump half coupling
63	3377 1110 08	4	Nut M8
64	3377 0004 69	4	Washer $\varnothing$ 8
65	3377 0004 77	4	Screw M8x35, use Loctite 245
66	3377 0004 88	1	Pump 7.0 cc For EU approved power packs
66	3377 0217 06	1	Pump 6.1 cc For not EU approved power packs
67	3377 0004 69	4	Washer $\varnothing$ 8
68	3377 1215 08	4	Screw M8x16, use Loctite 245
69	3377 1000 10	4	Washer $\varnothing$ 10
70	3377 0000 30	1	Spacer
71	3377 0004 13	1	Stop screw M4x4
72	3377 0004 14	1	Spring 0.9x9.1x23
73	3377 0007 92	2	Lock plate
74	3377 0005 68	1	Parallel key 6.3x6.3x45

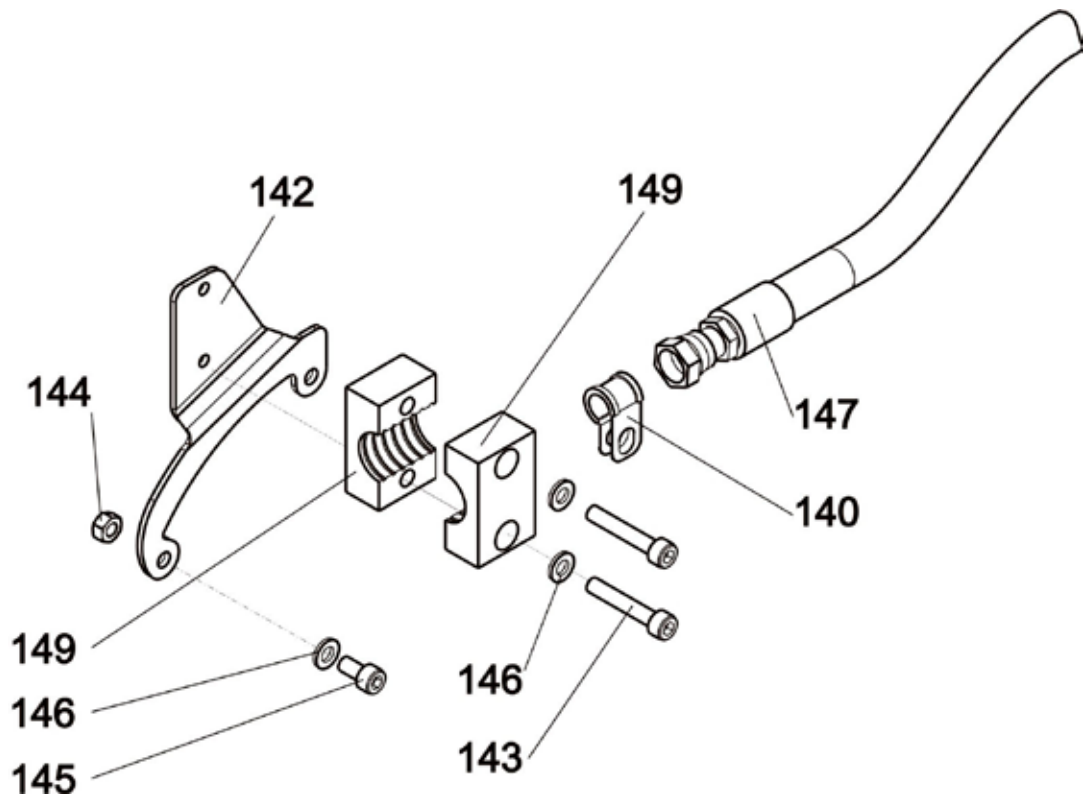
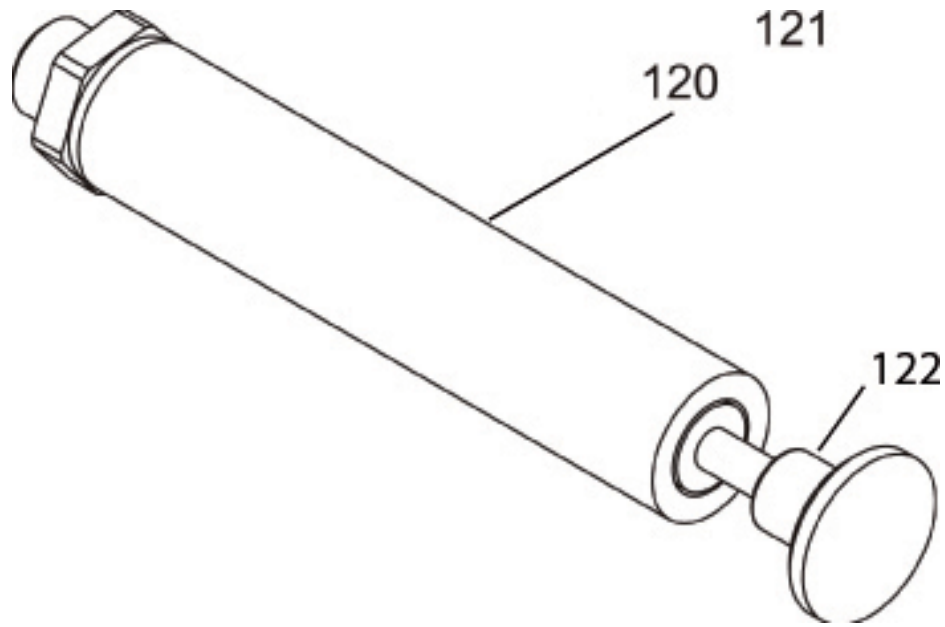


**D**



No.	Part Number	Quantity	Description	
80	3377 2223 11	2	Adaptor ¼ UNF – ¾" BSP	Use Loctite 245
81	3377 0160 19	2	Seal ring ¾ UNF	Bonded seal ¾ UNF
82	3377 0004 17	1	Adaptor 02-02 BSP male	Use Loctite 245
83	3377 0161 25	1	Seal ring	Bonded seal 1/8 BSP
84	3377 0011 98	1	Valve block	
85	3377 0217 87	1	Oil filter	25 Micron
86	3377 0050 82	1	Thermostat complete	
87	3377 1000 16	1	Washer	5/8"
89	3377 0052 63	1	Filter adaptor	Use Loctite 245
91	3377 0040 84	1	Thermostat end cap	
92	3377 0051 28	1	Locking ring	ø36x1.5
93	3377 1220 08	3	Screw	M8x30
94	3377 1110 08	3	Nut	M8
96	3377 0040 50	1	Clamp plate	
97	3377 0040 51	1	Seal	
98	3377 0041 34	1	Handle	M6, use Loctite 245
99	3377 0004 16	1	O-ring	ø9.6x2.4
100	3377 0136 04	2	Roll pin	ø4x16
101	3377 0136 04	1	Roll pin	ø4x16
102	3377 0007 44	1	Spool	
103	3377 0051 72	1	Pressure relief valve	
104	3377 0051 13	1	Seal ring	ø5/ø9x1
105	3377 1210 05	1	Screw	M5x10, use Loctite 245
106	3377 0163 75	2	Seal ring	Bonded seal ¾ BSP
107	3371 8051 37	1	Quick-release coupling	¾" Flat-face female
108	3371 8057 33	1	Protective cap	For ¾" and ½" female QRC
109	3371 8051 38	1	Quick-release coupling	¾" Flat-face male
110	3371 8057 28	1	Protective cap	For ¾" male QRC
111	3377 0004 18	1	Screw	M5x8, use Loctite 245
112	3377 0004 33	1	Hose fitting	½ hose barb - ½ BSP male
113	3371 8057 14	1	Seal ring	Bonded seal ½ BSP
115	3377 0051 13	1	Seal ring	ø5/ø9x1
116	3377 0004 35	1	Fitting 02	Use Loctite 245
117	3377 0047 47	1	By-pass valve	
118	3377 0005 88	1	Filter washer	
	3377 0210 23		Valve block complete	Incl. fig. No. 80-118

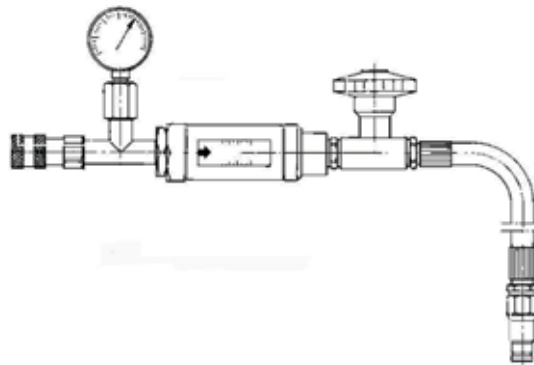
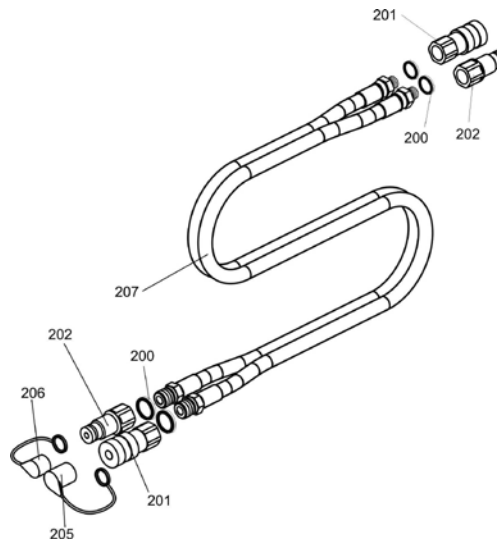
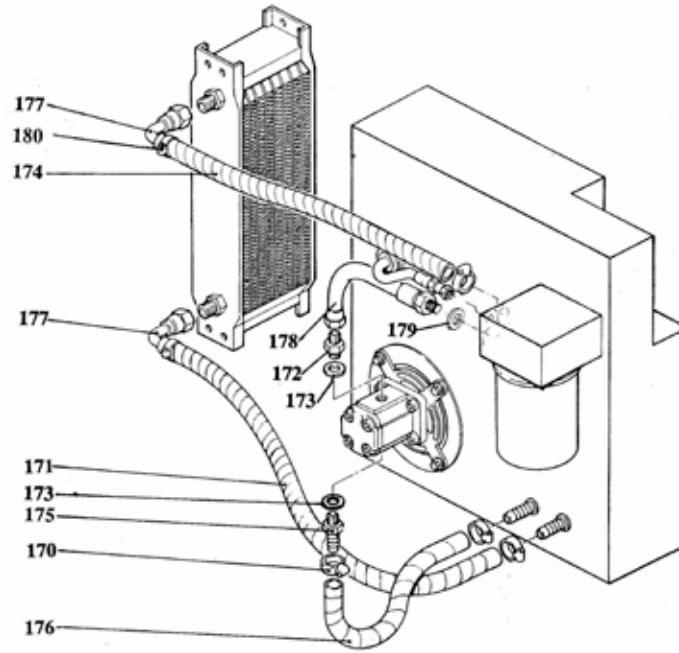
**D**



# E



No.	Part Number	Quantity	Description
120	3377 0047 74	1	Cylinder      POD complete
121	3377 0001 21		Seal kit      For POD cylinder
122	3377 0057 30	1	Knob          For POD cylinder
140	3377 0057 11	1	Hose clip     For POD hose
142	3377 0002 05	1	Bracket      POD
143	3377 0004 22	2	Screw        M6x35, use Loctite 245
144	3377 0004 23	1	Nut          M6
145	3377 1232 06	2	Screw        M6x12, use Loctite 245
146	3377 0004 07	4	Washer      ø12/6.5x1.5 (steel)
147	3377 0506 95	1	Hose          1/8 BSP F - 1/8 BSP F
149	3377 0004 25	1	Pipe holder



# F



No.	Part Number	Quantity	Description	
170	3377 0007 89	4	Hose clip	∅19/12
171	3377 0004 26	1	Cooler return line	
172	3377 0004 32	1	Adaptor 08 BSP - 06 BSP	For EU approved power packs
172	3377 0005 65	1	Adaptor 08 JIC - 06 BSP	For not EU approved power packs
173	3371 8057 14	2	Seal ring ½ BSP	For EU approved power packs
173	3377 0217 08	2	O-ring ∅16.36x2.21	For not EU approved power packs
174	3377 0004 29	1	Cooler feed line	
175	3377 0004 33	1	Hose fitting ½ - 08 BSP male	For EU approved power packs
175	3377 0217 12	1	Hose fitting ½ - 08 JIC male	For not EU approved power packs
176	3377 0004 30	1	Suction hose	L=185 mm
177	3377 0004 27	2	Elbow hose fitting	½ hose barb - ½ BSP male
178	3377 0004 31	1	High pressure hose	
179	3377 0160 19	1	Seal ring	Bonded seal ¾ UNF
180	3377 0007 90	2	Hose clip	∅21/15
<b>Optional equipment:</b>				
-	3371 8010 87	1	Twin extension hose complete	Incl. fig. No. 200-207
200	3371 8057 14	4	- Seal ring	Bonded seal ½ BSP
201	3371 8051 33	2	- Quick-release coupling	½" Flat-face female
202	3371 8051 34	2	- Quick-release coupling	½" Flat-face male
205	3371 8057 33	2	- Protective cap	For ½" female QRC
206	3371 8057 32	2	- Protective cap	For ½" male QRC
207	3371 8030 52	1	- Twin extension hose	7 m ½" BSP M – BSP M
	3371 8011 54		Test equipment	



**2008-10**

**No. 3392 5160 01 a**

© Copyright Chicago Pneumatic Construction Tools  
STOCKHOLM • SWEDEN

**Chicago Pneumatic Construction Tools**